



Manufacturers and distributors
of quality chassis, suspension, driveline
and components

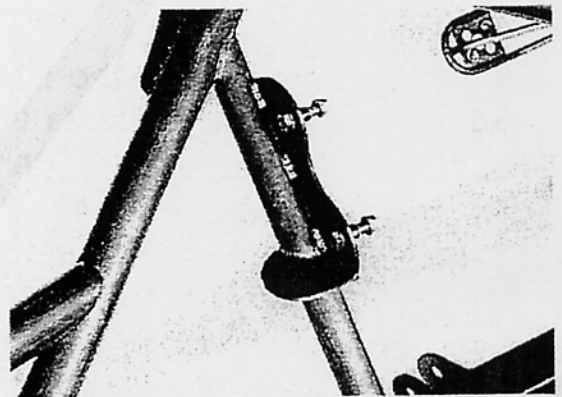
INFO & TECH: (561) 863-2188
ORDERS ONLY: (800) 327-9402
FAX: (561) 863-1424

Motor Plate Mounting Kit

Part #3690

Parts List:

- 2..Motor mount side brackets
- 2..Motor mount rest brackets
- 4..1/2" weld sleeves
- 4..3/8"x 1-1/2" Gr. 8 fine bolts
- 4..3/8" stover lock nuts fine
- 4..3/8" Gr. 8 flat washer



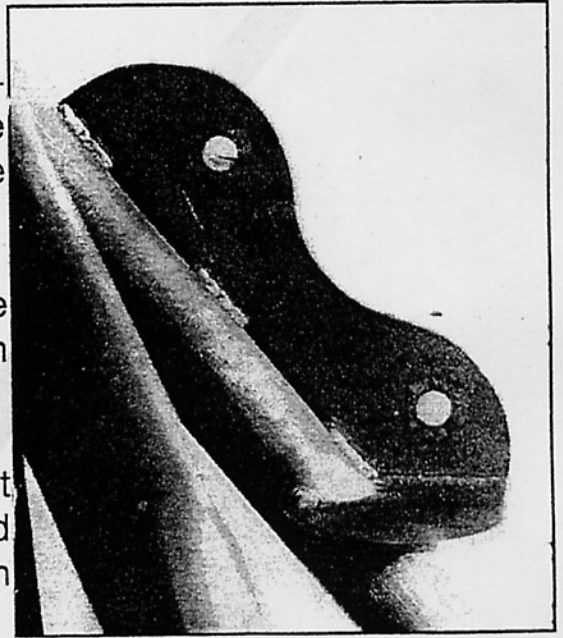
This kit will help in the mounting of a motor plate in a tube chassis with a strut front end or any other type of front end that a mounting area can be reached by the motor plate.

1...With the motor positioned in the chassis at the proper height, cut the motor plate to fit to the chassis mounts.

2...Hold up the motor mount side mounting brackets to the motor plate and mounting point. Trim the bottom of the brackets to the same shape as the bottom of the motor plate.

3...Clamp the brackets to the back side of the motor plate even with the bottom and tack weld in place.

4...Cut and fit the small lower rest brackets to fit even with the bottom of the side rests and around the support tubes. (See photo #1) Tack weld both sides in place when fit.



1 5 0 0 A V E N U E R • R I V I E R A B E A C H • F L O R I D A 3 3 4 0 4



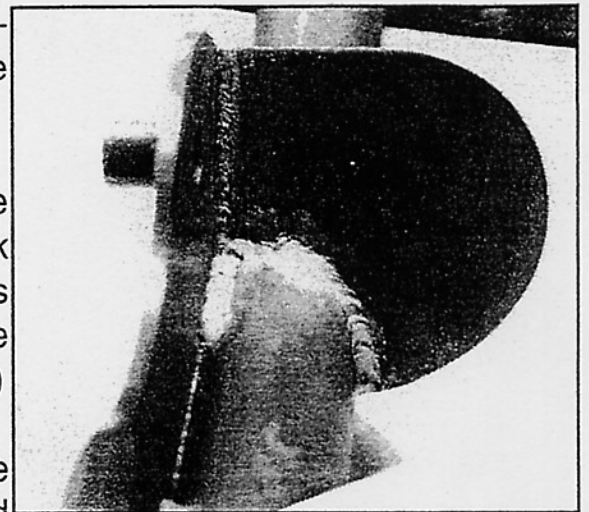
Manufacturers and distributors
of quality chassis, suspension, driveline
and components

INFO & TECH: (561) 863-2188
ORDERS ONLY: (800) 327-9402
FAX: (561) 863-1424

5...Drill two 3/8" mounting holes in the side mounting brackets at the desired locations. (do not drill the motor plate at this time).

6...Bolt the weld sleeves to the back side of the mounting brackets with the bolts in the kit. Tack weld the sleeves to the brackets. Remove the bolts and finish welding. See photo #2 (A drill must be run through the holes to clean them up when done.)

7...Drill the holes in the motor plate only when the car is completely finished and sitting on the ground ready to race with the fuel, water, oil, and any weight that will be added. If you do not do this the bolt holes will not line up or the bolts will be hard to put in or remove.



1 5 0 0 A V E N U E R • R I V I E R A B E A C H • F L O R I D A 3 3 4 0 4