

Manufacturers and Distributors of quality chassis,
suspension, driveline and components

Tech Line & Information: (561) 863-2188
Orders Only: (800) 327-9402
Fax: (561) 863-1424

C/E 2708 - RACK MOUNT KIT (Mustang II RACK)

PARTS LIST:

- 2... Aluminum Rack Bushing Sets (1-inner, 1-outer each)
- 2... 1/2" x 3-1/2" Fine Thread Bolts
- 2... 1/2" Flat Washers
- 2... 5" x 3/4" x .156 DOM Tubing Threaded 1/2"

These instructions are just one way of properly installing Mustang II Rack Mount kits. Depending on your fabrication experience, you may find it easier or more convenient using other methods that accomplish the same results. Every installation is slightly different and we have attempted to structure these instructions to make your installation as easy as possible.

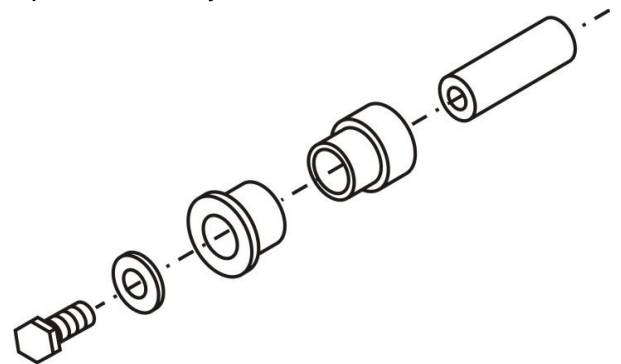
NOTE: THIS KIT IS FOR THE MUSTANG II RACK AND PINION ONLY.

Installation:

1...The mounting posts for the rack and pinion will have to be installed in the rack and pinion crossmember. Their location should be offset to the driver's side of the car by 1/2" when finished. To do this, first measure the width of the rack mounting holes by placing the aluminum mounts and mount posts into the rack and measure the posts, center to center. The bushing with the fat shoulder and recessed hole will be the one closest to the crossmember.

2...Drill two 3/4" holes in the cross member at this width, measuring from the center of the crossmember out each way, half of the width. Weld the posts to the cross member with the threaded end out of the crossmember 2 inches. It is recommended that when welding the posts that they should be bolted into the rack to hold them straight. (The mounting posts will point to the front or rear of the car depending on the desired location of the rack.)

3...To determine the width of the cross member find the center of the mounting posts and remark the cross member. Now with the mounting posts pointing towards you, measure over a 1/2" to the left of the mark and made in the center of the mounting posts and mark the cross member. This line will be the new cross member centerline that you measure the width of the cross member from.



4...The centerline of the rack will be from 3" behind to 3" to the front of the spindle steering arm mounting holes. Determine the mounting point of the cross member and measure the inside width of the frame rails. Take the width of the inside of the rails measure half each way from this line and cut the cross member to fit.

5...Mount the cross member between the frame rails at the right distance from the steering centerline with the output shaft pointing at the right angle to miss the steering column.

6...Square and level the cross member before welding in place.