

Manufacturers and Distributors of quality chassis,
suspension, driveline and components

Tech Line & Information: (561) 863-2188
Orders Only: (800) 327-9402
Fax: (561) 863-1424

C/E8095 – Sail Panel Kit

These instructions are just one way of professionally installing this Sail Panel Kit. Depending on your fabrication experience, you may find it easier or more convenient using other methods that accomplish the same results. Every installation is slightly different, and we have attempted to structure these instructions to make your installation as easy as possible.

Start your installation by opening all packages and check the parts you have received against the parts list.

Parts list:

- 1...Left Hand Sail Panel
- 1...Right Hand Sail Panel
- 1...Left Hand Window Support
- 1...Right Hand Window Support
- 1...Quarter Window Template



1...With the car on the jig table, make sure it is supported correctly. The inside area where the inner structure will be removed should also be supported. This is critical as the car will be able to move with this section removed from the sail panel area.

2...On the outside of the sail panel area, use the template to correctly mark the area behind the drip edge for cutting. You are going to cut on this line and just below the factory lead seam line.

3...Now follow the cut line instructions on the patch panel for the rest of the area to be cut. Once you have removed the cut panel, the inside structure will be exposed. You will need to cut some of the inner structure from the outside now, as you will not be able to get to it from the inside.

4...Now Cleco the new in panel in position. The final fitting can be done before tacking the panel in place.

5...Next is where you will need to cut a small wedge out under the quarter window. This will run along the area between the window lip and the hip crease of the quarter panel. Once you have made this incision you will need to pull the drip edge of the window out to meet up the relocated sail panel.

6...There is a small piece of sheet steel, included in the kit, that can be cut and trimmed to fit the two wedge pieces taken out from below the quarter window. Cut, fit and tack weld the pieces into place.

7...Next cut and fit the Quarter Windowsill Supports. Cleco into place. Then rough fit the quarter window Lexan.

8...Once satisfied with the fit, tack into place (remove Lexan first).

9...Check placements and fit of all panels. Once satisfied with the fit, weld all.

10...See picture guide attached



Hip before Sail Panel installation



Hip after Sail Panel installation



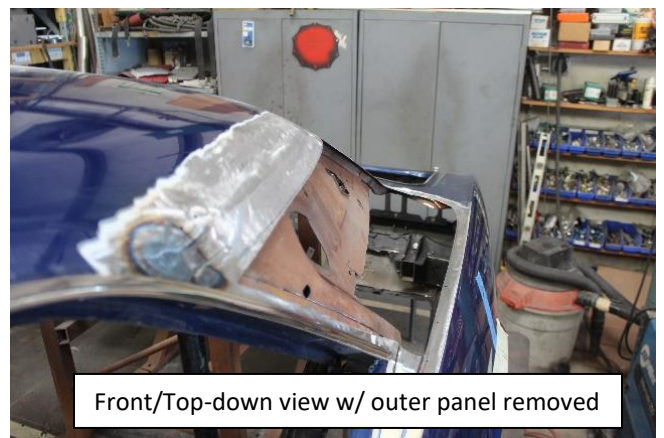
Inside with support in place and inner structure removed & sail panel installed



Sail panel removed showing inner structure



Rear view of outer panel removed



Front/Top-down view w/ outer panel removed



New Sail Panel Cleco'd in place



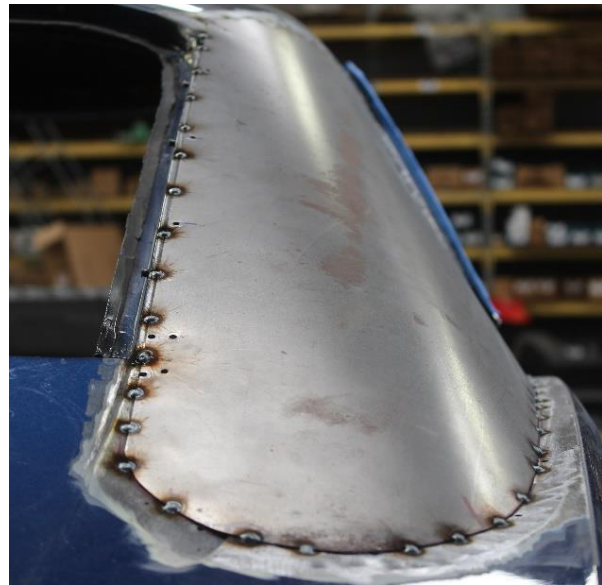
Rear View of Sail Panel Cleco'd



Frontside shows wedge area to be removed
Allows drip rail to be pulled out to meet panel



Wedge area cut out to move drip rail out



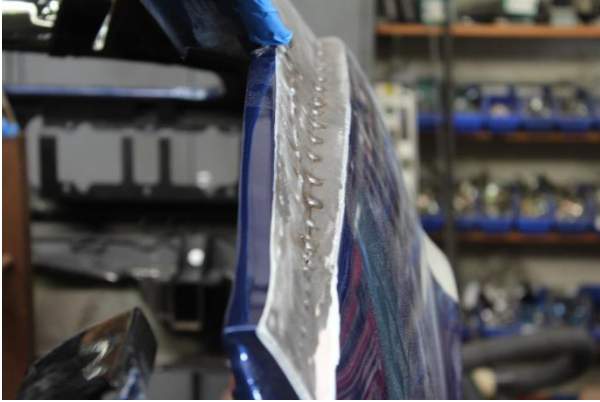
Rear View Panel Tacked into Place



Panel & Wedge Tacked into Place – Outside



Panel & Wedge Tacked into Place - Inside



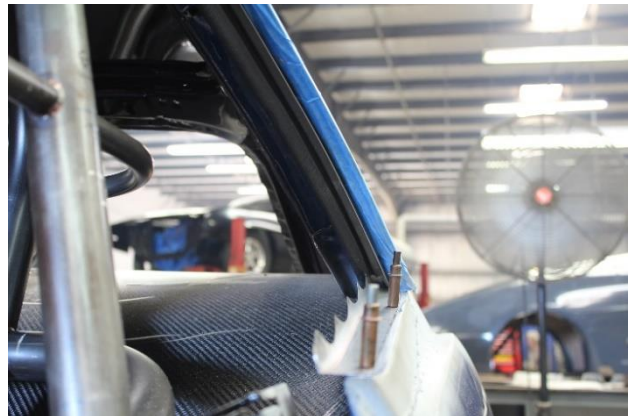
Front View – Wedge Tacked into Place



Side View – Wedge Tacked into Place



Front View Drip Edge Moved & Welded



Quarter Window Support Cleco'd



Window Support Welded into Place W/Lexan Cleco'd



Finished in Primer